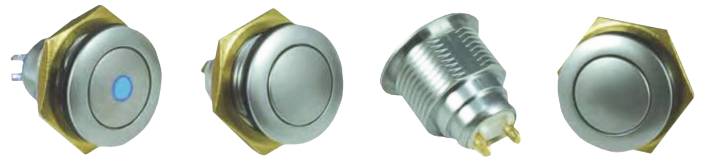


SERIES 57M - 16MM MINIATURE PANEL SEALED METAL

The 57M is a miniature switch designed for rugged environments. The housing alloy with velour chrome plating. It is available as maintained or momentary action, Electro-mechanical operation with Gold plated contacts and solder terminals.

It is ideal for a multitude of applications.



APPLICATIONS:

- Security Equipment
- Industrial Control
- Medical Equipment
- Military Equipment
- Food Processing
- Transportation
- Computers



KEY FEATURES:

- Zinc Alloy/Velour Chrome Plated
- Center Spot LED and Non-Lighted Versions
- Maintained or Momentary Action
- Panel Sealed to IP67
- RoHS Compliant
- Electro-Mechanical
- Gold Plated Contacts and Terminals

ORDERING INFORMATION:

Switch Function:	Housing Material:	Illumination:	LED Color:	Voltage Resistor: If Blank*
1 Mechanical, Momentary, Solder Terminal 2 Mechanical, Maintained, Solder Terminal 5 Mechanical, Momentary, PC Terminal 6 Mechanical, Maintained, PC Terminal A Mechanical, Momentary, Wireleads B Mechanical, Maintained, Wireleads 9 Special, Digits Are in Serial Order	1 Zinc Alloy, Velour Chrome Plated	0 Non-lit 1 Center Spot Illumination 2 Ring Illumination 3 Standby Logo Illumination	N None G Green A Amber Y Yellow B Blue W White RB Red/Blue RG Red/Green	05 5V Forward 12 12V Forward 24 24V Forward
<div>57M - <input type="text"/> <input type="text"/> <input type="text"/> <input type="text"/> <input type="text"/></div>				

* Current limiting resistor is required to limit LED forward current to 20 mA (not included).

PRODUCT DRAWINGS

MECHANICAL / ELECTRICAL CHARACTERISTICS:

Circuit:

SPST-NO-DB

Button travel (nominal):

0.09inches / 2.3mm

Operating force (nominal):

3N / 306g

Contact bounce (nominal):

1 millisecond

Panel thickness:

0.20 - 0.120 inches / 0.5 - 3mm

Temperature index:

-40°C to + 85°C

Torque (max):

10 inch pounds

LED operating temperature:

-13°F to + 185°F / -25°C to + 85°C

Current Rating (resistive):

57M (Momentary)

250mA@ 12VDC, 100k Cycles

150mA@ 28VDC, 150k Cycles

100mA@ 48VDC, 100k Cycles

10mA @ 12VDC, 1,000k Cycles

57M (Maintained)

50,000 Cycles Nominal

ELECTRICAL SPECIFICATIONS

Dielectric strength:

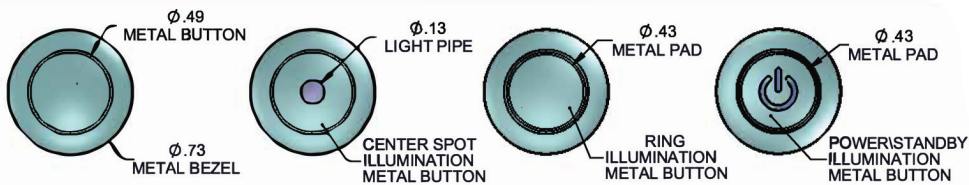
1,000 VAC

Insulation resistance:

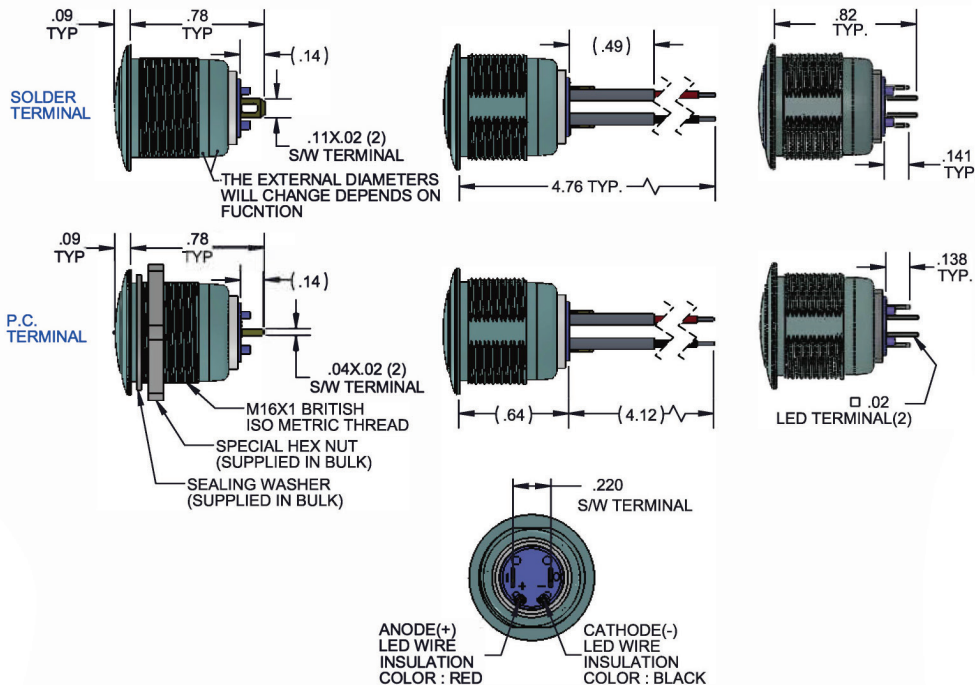
1GΩ

Contact resistance:

50mΩ max(initial)



57M SERIES



WIRELEADS

