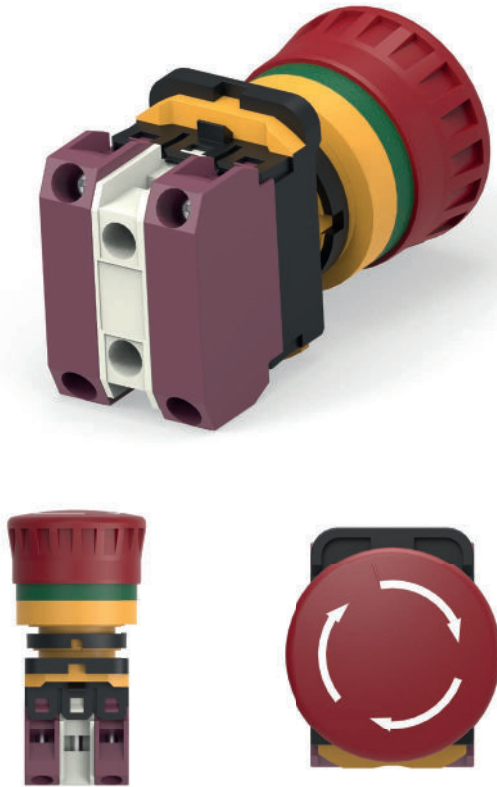


# ALCOSWITCH PUSHBUTTON

## 22MM EMERGENCY STOP SWITCH



### PRODUCT OVERVIEW

TE Connectivity (TE)'s ALCOSWITCH PBES22 series pushbutton emergency stop switch is offered in illuminated or non-illuminated styles. When mounted, the switch offers IP65 protection on the front of the panel. Easy to terminate screw terminals allow fast and virtually tool-free termination. Optional mounting plate is also available with this series.

### FEATURES

- Available in LED & incandescent and illuminated & non-illuminated options.
- Visually appealing switches with illuminated options for easy visibility during emergency safety situations.

### BENEFITS

- Available in LED & incandescent and illuminated & non-illuminated options.
- Visually appealing switches with illuminated options for easy visibility during emergency safety situations.
- Available in standard mounting size of 22mm making it a suitable fit for existing applications.
- IP65 rated with IEC 60947-5-1 & IEC 60947-5-5 standardizations.
- Equipped with high actuation force.

### APPLICATIONS

- EVI / BESS
- Warehouse automation
- Panel builders
- Control & safety panels

### ELECTRICAL

- 6A@120V

### MECHANICAL

- 100,000 operations min

### STANDARDS

- UL
- TUV
- CE
- IEC

### SPECIFICATIONS

- IP65
- IEC 60947-5-1
- IEC 60947-5-5